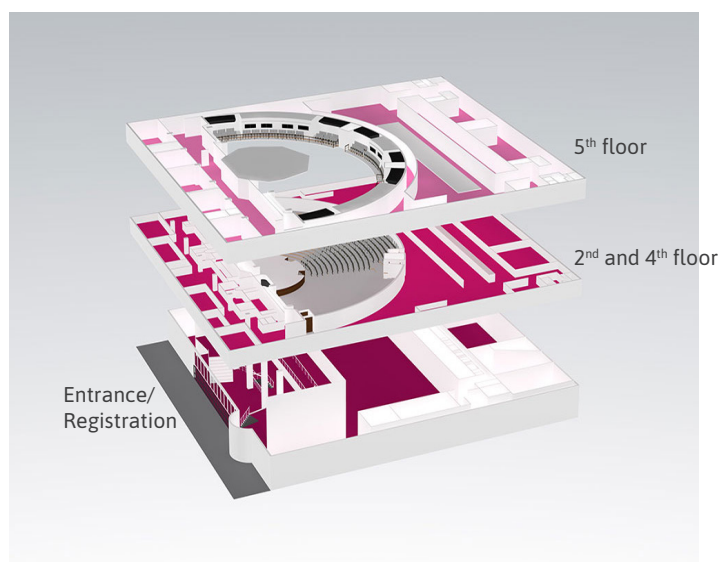


# FLOORPLANS

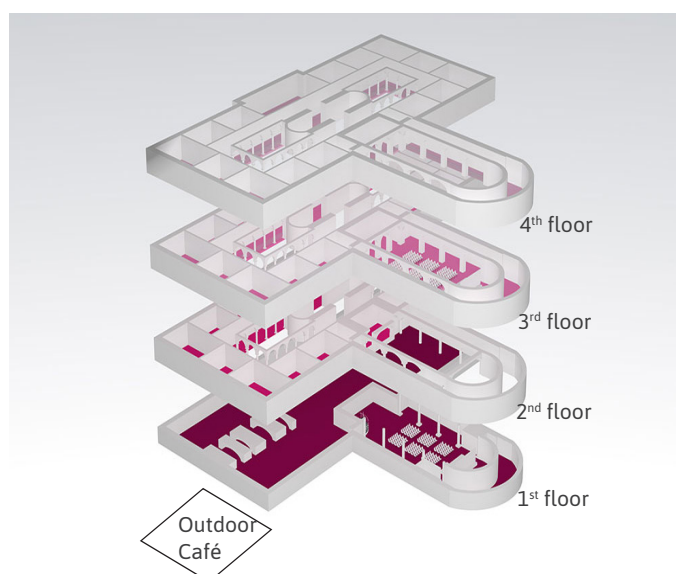
## FOLKETS HUS

- Registration
- Plenary Sessions
- Exhibition Area
- Lunch & Coffee
- Meeting Rooms



## NORRA LATIN

- Parallel Sessions
- Poster Sessions
- Workshops
- Exhibition Area
- Lunch & Coffee
- Meeting Rooms
- Outdoor Café

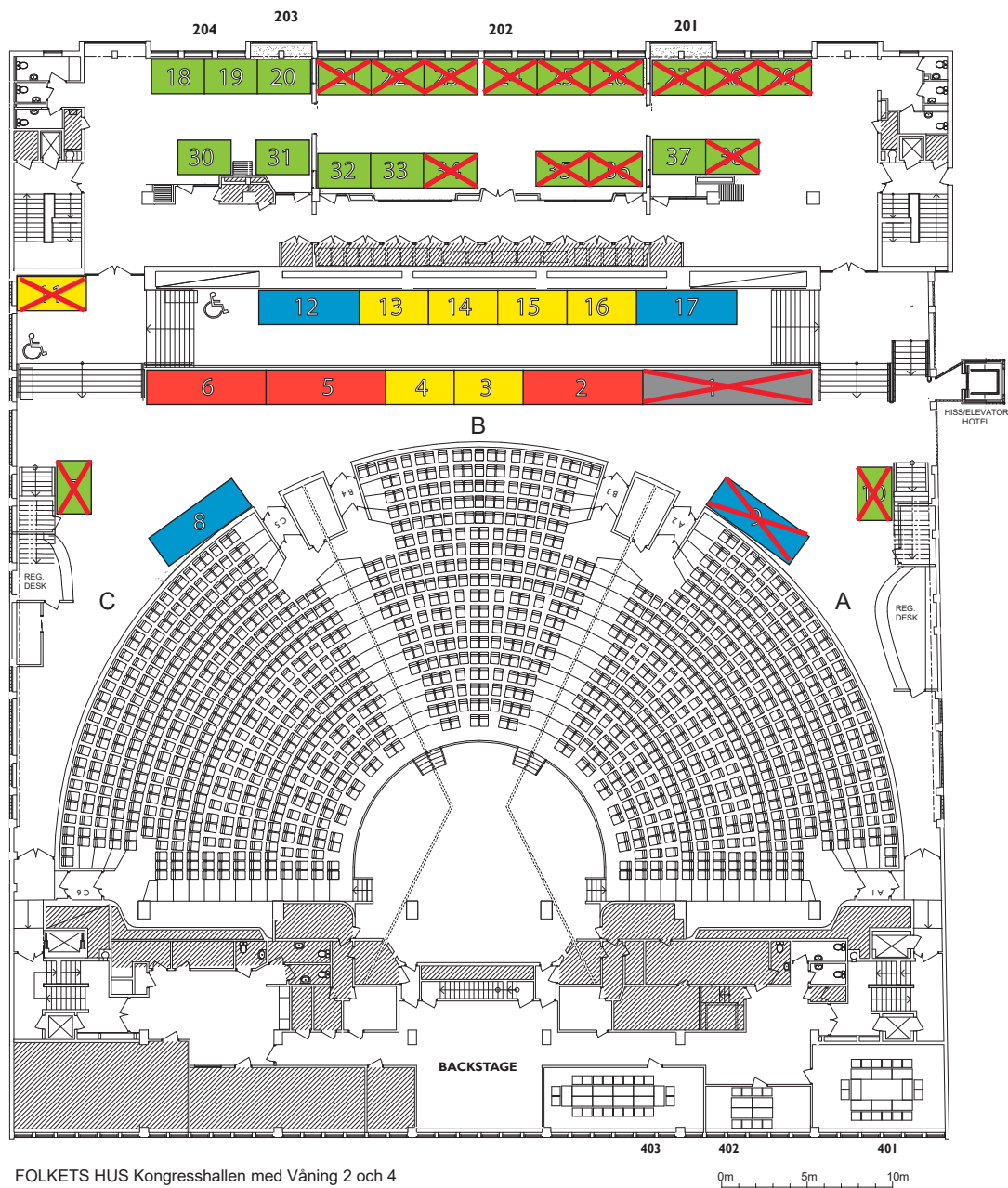


# FLOORPLAN EXHIBITION AREAS - FOLKETS HUS

2<sup>nd</sup> and 4<sup>th</sup> Floor

Congress Hall

Plenary Sessions and Exhibition Areas



FOLKETS HUS Kongresshallen med Våning 2 och 4  
The Congress Hall with Second and Fourth Floor



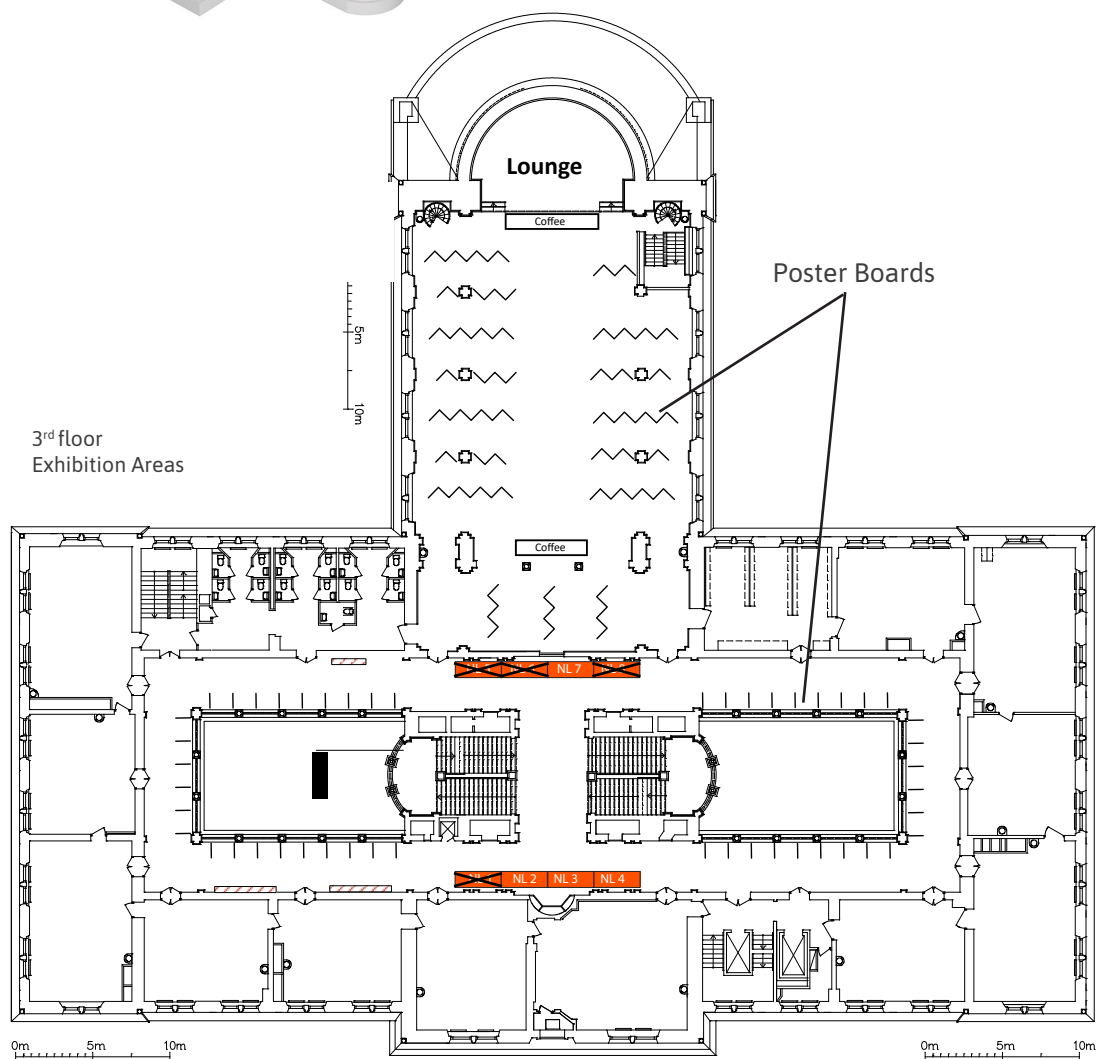
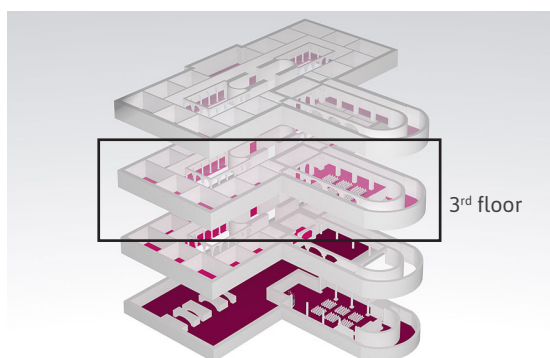
*Floorplan subject to change*

## FLOORPLAN EXHIBITION AREAS - NORRA LATIN

3<sup>rd</sup> floor

Exhibition Area (3x1 m)

Poster Area and Session Rooms



3x1m

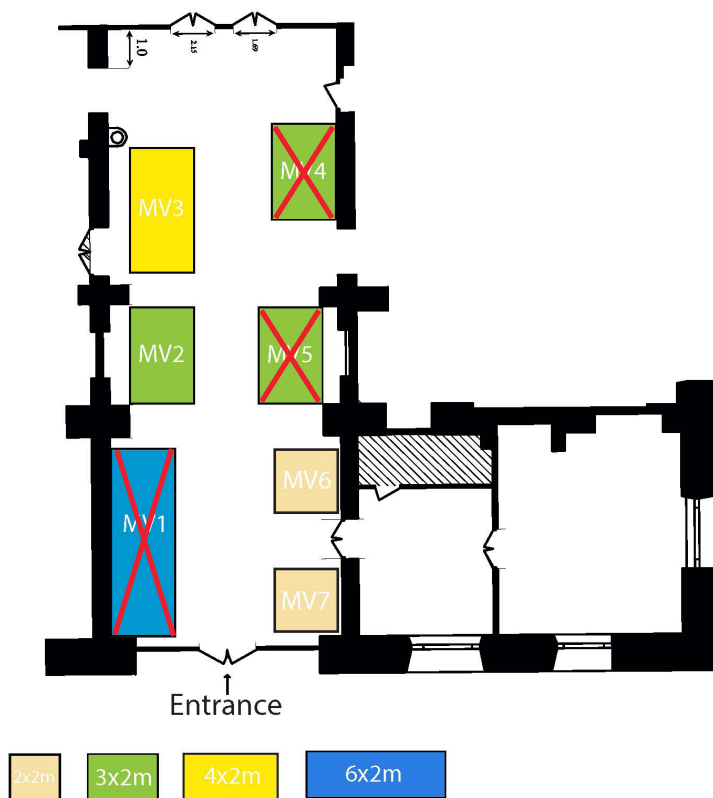
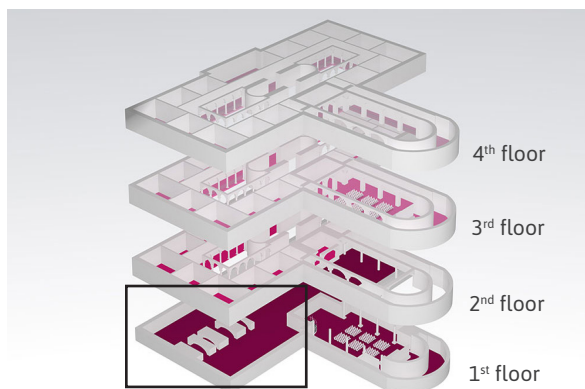
Floorplan subject to change

## FLOORPLAN EXHIBITION AREAS - NORRA LATIN

1<sup>st</sup> floor - Marble Vault

Exhibition Area

Right outside the Marble Vault we will build up the outdoor café



*Floorplan subject to change*